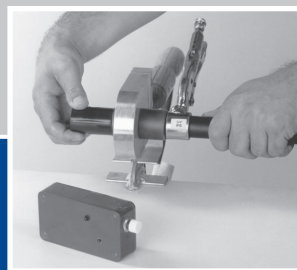


## Socket Heat Fusion **Techniques**



A Guide for  
Instruction and Training  
in Vanguard  
Socket Heat Fusion





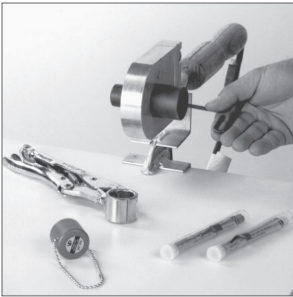
## TABLE OF CONTENTS

**This brochure has been developed to assist those responsible for socket fusion joining Vanguard Piping with PE 4710 Fittings.**

SOCKET FUSION PROCEDURES	2 - 7
COOLING AND CURING CHART	5
REVIEW AND REFERENCE	8
FUSION EXAMPLES	9

*The procedures detailed herein are applicable to all PE4710 pipe manufactured according to ASTM D 3035 and D 2447 specifications.*

# SOCKET FUSION PROCEDURES



**Figure 1:**  
Socket Fusion Tools

## 1. PREPARE THE TOOL

- Attach the correctly sized socket fusion faces for the pipe size being fused to the heating tool. The faces shall be tight against the tool to ensure a good heat transfer. Socket faces should be in good condition with little or no loss of non-stick coating. Faces which are in question shall be replaced before proceeding.
- Attach the heating tool to an adequate power supply and allow sufficient time for the tool and fusion faces to come up to a surface temperature of 500 to 525°F. Place the tool inside an appropriate heater bag (Vanguard part number FHFB) or other enclosure to reduce heating time, especially in cold or windy weather.



1. Use a power supply not in use with other tools. Single face heating tools draw 400 watts, while double face tools draw 500 watts. Allow a minimum of 5 amp service.
2. Loose socket faces impair heat transfer.
3. Inadequate power supply and inadequate power cord causes loss of amperage resulting in heat loss.
4. Other tools on the same power source may cause loss of amperage and heat.

## 2. CLEAN THE SOCKET FACES AND CHECK TEMPERATURE

- All heater faces have a thin layer of non-stick coating that is easily scratched or scraped off. This coating prevents melted PE from adhering firmly to the heater faces and must be kept clean of plastic residue.
- Metal tools should NEVER be used to clean the heater faces. They will scratch and remove the coating. Clean, dry, lint-free, non-abrasive cotton rags are recommended for cleaning. All-cotton rags are recommended because rags containing a substantial amount of synthetic fibers may melt and char against the heater surface.
- If the non-stick coating becomes worn or scratched, the heating faces must be recoated.
- Melted PE adheres firmly to the heating iron and is more difficult to remove at places where the coating has been scraped off the faces. In addition, since the coating acts as an insulator, heat transfer in the uncoated areas is greater and local overheating can occur.

## SOCKET FUSION PROCEDURES

- Heating tool thermometer indicates internal tool heat temperatures, NOT the socket face surface temperatures.
- Socket face temperatures MUST be 500 to 525°F. This is especially critical in cold weather.
- Check the heater temperature with Tempstick® crayon indicators (Vanguard part number FHS500 and FHS525) or surface pyrometer often to make sure the thermometer or other temperature measuring device is reading accurately. (See Figure 2) Under heavy use conditions, or during cold or windy conditions, check the temperature more frequently.

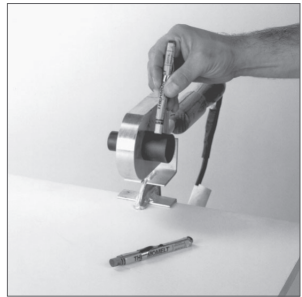


Figure 2



To increase temperature, turn set screw counter-clockwise. A quarter of a turn equals a 30 degree change. Do not turn excessively. **More than 5 turns will ruin the thermostat.**

- Don't clean the socket face surfaces with a synthetic fabric (such as polyester or nylon).
- Don't use temperature indicating crayons on the surface of the non-stick faces where the pipe and fitting come in contact.
- NEVER lay a fusion tool on the soil or grass when the heat cycle is completed. Return it to the heater bag, if possible, or at least lay it on the heater bag. Soil will contaminate the joint and is abrasive to the coating; grass may burn and char on the heater surface.

### 3. PREPARE PIPE END AND FITTINGS

- Using a tubing cutter, squarely cut of the damaged or oval ends of the pipe.
- Fitting and pipe surfaces shall be clean and dry; wipe with a cloth, do not touch with your hands.
- Inspect each and every fitting for out-of-roundness or damage and wipe clean. Check inside pipe for contaminants or obstructions.
- Do NOT use flattened, damaged or out-of-round pipe.
- Pipe and fittings shall not be used if an interference fit is not evident. Allowable tolerances ensure a forced fit and when heat fusion is applied, the pipe and fitting will readily mate.
- A chamfering tool may be used to remove about 1/16" of the sharp corner at the pipe end on the outside surface of pipe sized 1 1/4" IPS and larger. Remove burrs and chips inside the pipe end.

## SOCKET FUSION PROCEDURES

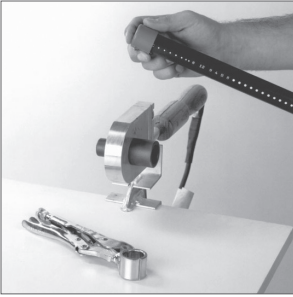


Figure 3



Figure 4

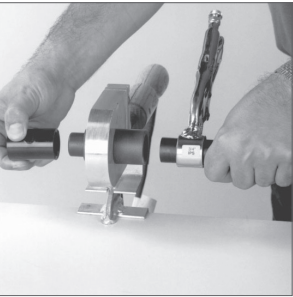


Figure 5

### 4. USE THE PROPER DEPTH GAUGE AND COLD RING

- After the pipe end and fitting sockets have been cleaned and inspected, prepare the pipe for correct penetration into the socket, place the depth gauge down flush on the end of the pipe. (See Figure 3)
- Clamp the correctly sized cold ring around the pipe, adjacent to the depth gauge. After securing the cold ring clamp, remove the depth gauge. (See Figure 4)
- Using the depth gauge/cold ring combination assures that the heated pipe and fitting will join at the proper depth, prohibiting the pipe from either penetrating too far into the fitting, creating a flow restriction, or failing to penetrate the fitting deeply enough for adequate joint strength. The cold ring also helps keep the pipe round while it is being heated.

### PIPE END AND FITTINGS ARE NOW READY FOR HEATING.

### 5. HEATING THE PIPE AND FITTING SIMULTANEOUSLY

- Grip the pipe behind the cold ring. (See Figure 5)
- The socket faces of the heating tool shall be at a 500-525°F surface temperature and clean.
- First, firmly seat the socket fitting on the male face of the heating tool.
- Then place the female face on the end of the pipe firmly against the cold ring clamp.

### HEATING TIME STARTS NOW.

## SOCKET FUSION PROCEDURES

- While holding the fitting and pipe firmly in a fixed position, heat both for the heating cycle shown in Table 1.
- Too much pressure against the socket face plate will cause a rollback of the fitting edge, shortening the actual socket depth and creating a gap when the pipe and fitting are joined.

**TABLE 1. POLYETHYLENE, PE 4710 SDR-11 AND SDR 13.5**

SIZE (INCHES)	HEATING CYCLE*	HOLDING TIME*	CURING TIME BEFORE HANDLING*
3/4" IPS	8-10 sec.	30 sec.	20 min.
1" IPS	10-14 sec.	30 sec.	20 min.
1 1/4" IPS	12-15 sec.	30 sec.	20 min.
1 1/2" IPS	15-18 sec.	40 sec.	20 min.
2" IPS	18-22 sec.	40 sec.	30 min.

- \* Always use a timing device (FHFT, wrist watch or facsimile) to determine accurate cycles.
- \* When working against the memory of the coil, holding times shall be at least doubled.

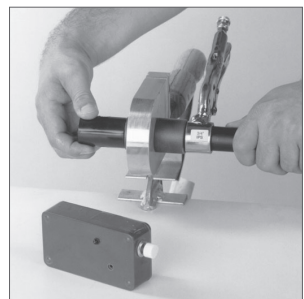


It is imperative to check face temperatures before each fusion in cold weather (below 32° F). Make sure wind currents, etc., do not affect temperatures. Use the FHFB heater bag during periods of delay to prevent heat loss when fusing in cold weather.

### 6. PIPE AND FITTING ARE PROPERLY FUSED

- When the heating cycle is complete, remove the pipe and fitting from the fusion faces with a quick snap action.
- Quickly inspect the heated parts to ensure all interfacing surfaces have been melted. If the melt is not complete, stop. Do not attempt to assemble pipe and fitting. Cut off the melted pipe end, use a new fitting, and repeat fusion steps 3 through 6.
- Within 3 seconds after removing the pipe and fitting from the fusion faces, firmly push the melted fitting squarely onto the pipe until it makes firm contact with the cold ring.

**DO NOT TWIST.**



**Figure 6**

## TRANSITION CONNECTIONS

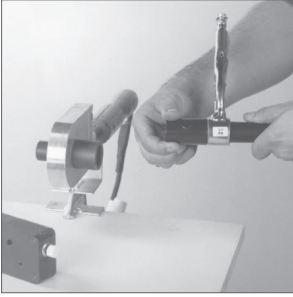


Figure 7

Hold the fitting firmly in place for the total holding time shown in Table 1 to ensure proper alignment. After waiting 3 additional minutes of cooling time, remove the cold ring clamp and inspect the joint.

A good joint will have a uniform melt ring that is flat against the socket and perpendicular to the pipe. There should be no cavity between the fitting and the pipe.

- Wait an additional 10 minutes to complete the cooling before the pipe joint is tested or stressed during burial.
- See Fusion Examples on page 9 for the visual parameters of a proper fusion.



Figure 8

**CLEAN FUSION SOCKET OFF IMMEDIATELY AFTER EVERY FUSION. ALL VISIBLE MATERIAL MUST BE REMOVED.**

- Material left on the socket faces will carbonize and disrupt good heat transfer. It will also form a barrier over the non-stick coating, causing poor release. Without a smooth release, dirty socket faces will strip off the molten surface plastic, resulting in a poor joint, possibly complete joint failure. Use a clean, dry, non-abrasive cotton rag to clean the socket faces. Do not use synthetic cloth, wet cloth or hard or metal objects which could damage the non-stick surface of the socket face. Wet or damp rags could significantly lower the temperature of the faces.



To avoid being burned, use caution when handling or cleaning hot fusion tools.

### TESTING FOR LEAKS

Upon completion of the installation, the system should be hydrostatically tested. Hydrostatic testing of the system is to be conducted according to local code requirements. Test pressure shall be at least expected working pressure of the system, but not less than 40 psi nor greater than the maximum working pressure of the pipe or the maximum test pressure recommended by the manufacturer.

The following is an option method which applies to test pressures up to 225 psi:

- During the initial pressurization period, the pressure indicated on the gauge will decrease due to the initial deformation of the tubing, followed by a slow expansion. The amount of pressure drop will depend on ambient temperature, system capacity and test pressure. If additional makeup water is introduced into the system to achieve the original test pressure after the first 1 1/2 hours of the test, the pressure decrease during the next 2 hours should be less than the loss in the first 1 1/2 hours.
- The pressure decrease due to pipe deformation and expansion shall not exceed 10 percent during the initial 2 hours of the test period, after which the expansion shall not cause the pressure to decrease more than 3 percent during the next 2 hour period.



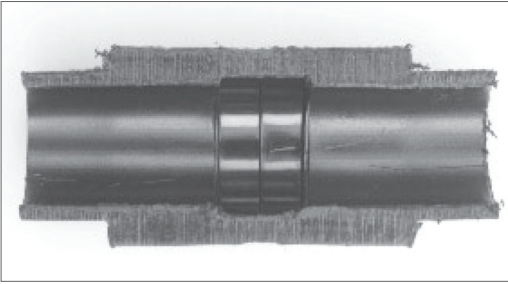
If a leak is detected, joint shall be removed and replaced. Do not attempt to "putty" leaks at a fusion joint.

## SOCKET HEAT FUSION

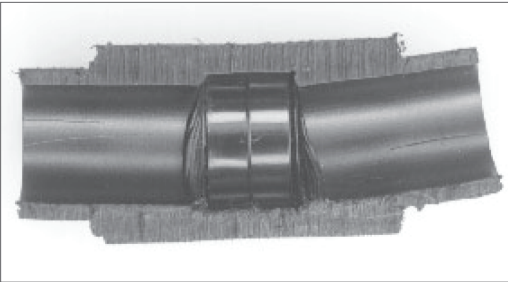
### REVIEW AND REFERENCE

1. Attach the correct socket faces, which are in good condition, to the heating body of the tool.
2. Connect tool to an adequate power supply (120 volts A.C.)
3. Heat faces between 500 and 525° F. Adjust temperature as necessary.
4. Square pipe ends with a pipe cutter designed for plastic pipe.
5. Wipe pipe end and fitting clean with a damp cloth.
6. Insert pipe end into the properly-sized depth gauge and attach the proper sized cold ring onto the pipe.
7. Begin timing the "HEAT CYCLE" as soon as the pipe and fitting are properly positioned on the pre-heated socket faces.
8. At the conclusion of the "HEATING CYCLE", snap the pipe and fitting from the tool.
9. Within three seconds, push the pipe and fitting together squarely without twisting.
10. Hold firmly together for the specified "HOLDING TIME".
11. Wipe hot socket faces clean with a clean, dry, non-abrasive **cotton cloth**.
12. Visually inspect each fusion joint.

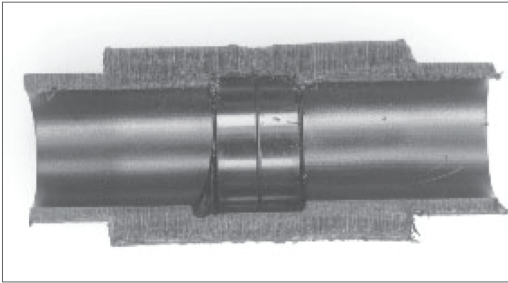
## FUSION EXAMPLES



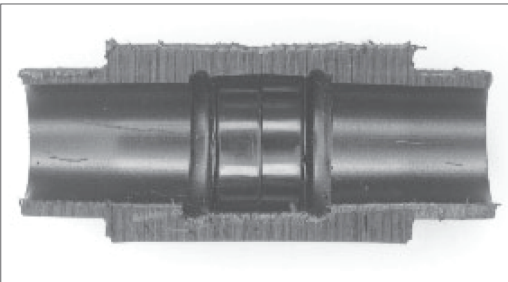
**Proper Socket Fusion**



**Improper:**  
Misaligned piping



**Improper:**  
Pipe ends improperly cut



**Improper:**  
Short insertion depth

## Socket Heat Fusion Techniques

### Vanguard Pipe & Fittings Ltd.

8125 North Fraser Way  
Burnaby, BC V5J 5M8  
Canada

**F.** 604.431.5029

**T.** 604.431.5024

**TF.** 888.PIPEPEX (747.3739)

[vanguard.ca](http://vanguard.ca)